



The management of large carnivores in Norway

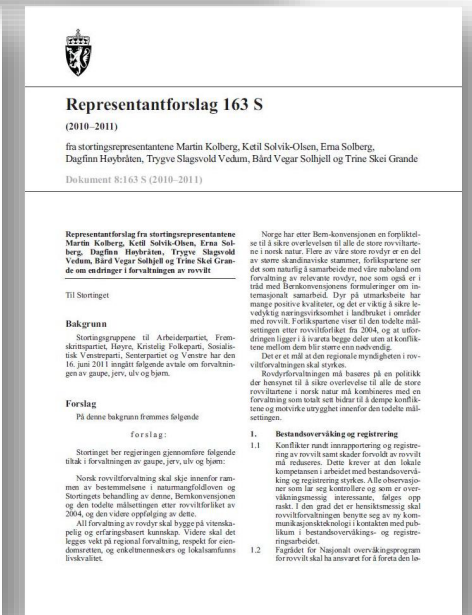
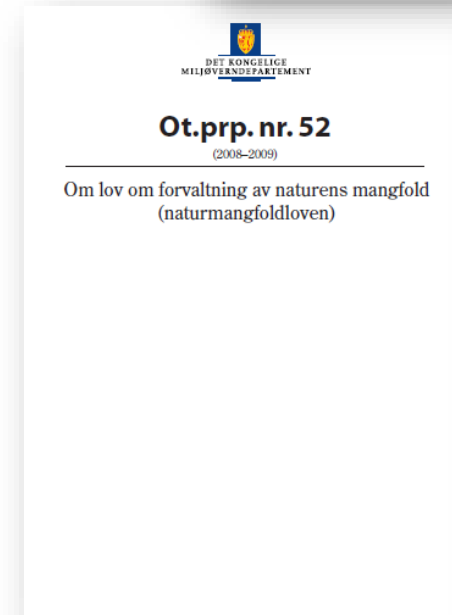
Challenges for reindeer husbandry — Measures to reduce loss

Deputy director general Torbjørn Lange

Svanhovd, November 9th 2022

The framework

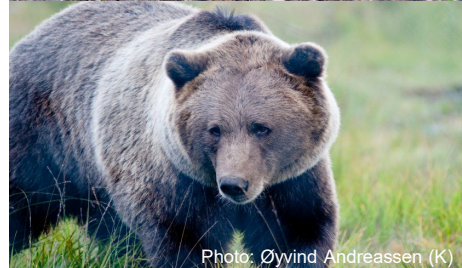
- The Bern Convention
- The Norwegian Nature Diversity Act
- Carnivore agreements in the Parliament (2004 og 2011)
- The population targets



Population targets and status

Species	Population target	Status
Wolf	4-6 litters (3 in Norwegian packs)	8 litters (4 in Norwegian packs)
Bear	13 litters	8,1 litters
Wolverine	39 litters	45 litters (of which 5 culled)
Lynx	65 family groups	58,5 family groups
Golden eagle	850-1200 nesting couples	1027 nesting couples*

* Estimated that 914-1145 monitored territories of golden eagle have been occupied one or more times the five last years



Regional management and regional carnivore committees



Photo: Torbjørn Lange

Population measurements

Important to reach the
population targets for each
species

Licensed culling

Quota hunting



Photo: Morten Gluva



Photo: Norwegian Nature Inspectorate



Protective hunting

- To prevent damages
- In acute situations
- Local or regional hunting teams
- Government pays local hunting teams
- Norwegian Nature Inspectorate can supervise and participate
- Guide for protective hunting



Photo: Norwegian Nature Inspectorate

Extra-ordinary culling



Photo: Norwegian Nature Inspectorate



Photo: Norwegian Nature Inspectorate

- To reduce loss of sheep and semi-domesticated reindeer
- Decisions by the Norwegian Environment Agency
- Executed by the Norwegian Nature Inspectorate

Damage reducing and conflict reducing grants

About 70 mill. N. kroner per year

The Norwegian Environment Agency
distribute the grants to each of the
eight large carnivore regions

Fencing/feeding



Photo: Susanne Hanssen

Knowledge and scientific research

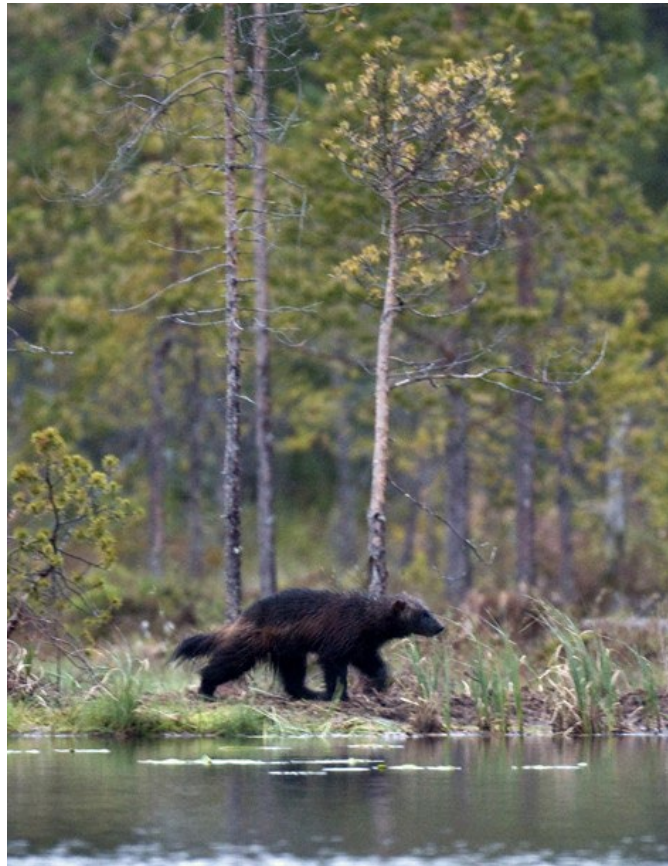


Photo:

Norwegian Nature Diversity Act § 8;

- As far as it is reasonable build on scientific knowledge about the stock situation of species, nature types prevalence and ecological state
- Emphasize knowledge-based knowledge
- Spend a lot of money to provide knowledge about all the aspects of the large carnivores including the losses of semi-domestic reindeer to large carnivores



Questions and comments?