



[PDF version](#) [Forward](#) [Register](#) [Unsubscribe](#)

NKJ turns 60

– take part of the celebration

NKJ turns 60 this year, and we have celebrated with a bang! We had both knowledge, experiences and partying for our full day celebration with friends and cooperation partners! Join us for a moment and celebrate Nordic cooperation in agriculture and food – click the link below!

[NKJ 1965-2025](#)



Nordic approach improves soil health

"By embracing a regionally adapted agroecological approach, Nordic countries can lead the way in building resilient, climate-smart food systems rooted in healthy soils", the network says in a policy brief, which provides a range of advice that can lead to better soil.

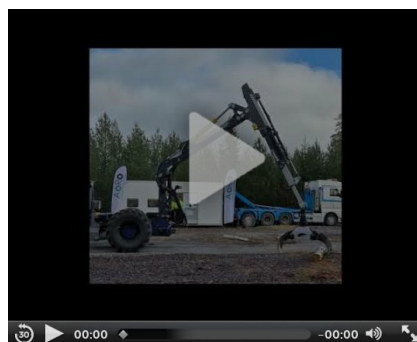


[See all the policy advice for improved soil health](#)

Exciting demos at Arctic Off-Road Robotics Laboratory Field Roadshow

See highlights from the Nordic Testbed Network Roadshow 4! The organisers (SLU, Swedish cluster of forest technology, Luleå University of Technology) demoed state-of-the-art field test infrastructure, purpose-built for research on autonomous off-road vehicles.

[More photos](#)



Participate in a Nordic conference on reindeer health and welfare

Animal health and welfare in reindeer husbandry – that is the theme for the upcoming TARANDUS conference in Sweden, 10-12 February, 2026.

Join and be part of Nordic knowledge exchange, fruitful discussions and hear knowledgeable speakers!



Deadline for registration and abstract submission: 22 December, 2025.

[Information about registration and abstract submission](#)

SHARE TO   

Personal data

As a receiver of the NKJ newsletter, you are registered in our subscription register with your email address. The addresses are only used for sending newsletters and nobody else have or will have any access to the register. You can at any time choose to end your subscription by clicking on the "Unsubscribe" link at the top right corner of the

newsletter.

[NKJ website](#)

WEBSITE: www.nordicagriresearch.org **EMAIL:** hansson.nkj@slu.se