

# ROADSHOW

**NORDIC TESTBED NETWORK**



**RAS Roadshow 2026:**

## Advancing Recirculating Aquaculture Systems in the Nordic-Baltic Region

**Time: 7th May, 2026**

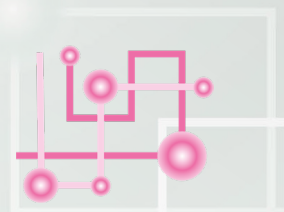
**Place: Klaipėda Science and Technology Park, Lithuania**

### **The Nordic Testbed Network Roadshow**

The Roadshow is a series of events held at various testbeds, aimed at engaging a target audience through presentations, demonstrations, and networking opportunities. The purpose is to connect the testbed members with relevant startups, end-users, other testbeds and other important stakeholders focusing on digitalisation in the bioeconomy sectors throughout the Nordic and Baltic region.

**NORDIC TESTBED NETWORK**

Supporting digital transformation in the Nordic bioeconomy



## RAS Roadshow 2026:

# Advancing Recirculating Aquaculture Systems in the Nordic-Baltic Region

Klaipėda Science and Technology Park (KSTP) invites you to the RAS Roadshow 2026 in Klaipėda, Lithuania, where the practical implementation, innovation potential, and commercialization pathways of RAS technologies will be highlighted. The event will showcase the Aquaculture Competence Centre at KSTP, including ongoing experiments focused on advancing recirculating aquaculture technologies and sustainable production models.

Participants will be introduced to an innovative RAS-based spin-off company AquaQIt, which recently received a patent for its shrimp tower technology. The event will also include a visit to Klaipėda University, Marine Research Institute, Fisheries and Aquaculture Laboratory, strengthening the link between research, pilot infrastructure, and commercialization. The event will target:

- Aquaculture companies and fish farmers
- Startups developing RAS technologies or related digital solutions
- Technology providers
- Researchers and students
- Public authorities and policy stakeholders
- Investors and innovation support organisations

### Practical information

Address: Vilhelmo Berbomo g. 10, Klaipėda LT92221

#### By plane

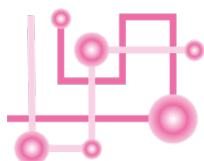
Palanga Airport (PLQ). It is recommended to take a taxi (Bolt app) to Klaipėda or arrange a pickup with your hotel.

#### By ferry

- TT-line from Karlshamn, Sweden
- DFDS from Kiel, Germany, and Karlshamn, Sweden

Accommodation near the meeting venue:

- [Mercure Klaipeda City](#)
- [Navalis Hotel](#)



Time: **7th May, 2026**  
Place: **Klaipėda Science and Technology Park, Lithuania**

### Program

9:00	Registration and coffee
9:30	Morning session Presentations, strategic overview
11:00	Coffee and snacks to go
11:30	Guided technical visits
12:30	Lunch
13:30	Transfer to Klaipėda University Marine Research Institute, Fisheries and Aquaculture Laboratory
17:00	Coming back to Klaipeda
18:30	Joint dinner. Networking and matchmaking.

**Sign up here!**

**Deadline: May 1<sup>st</sup>**

### Contact:

Erika Zavackienė  
[erika@kmtpl.lt](mailto:erika@kmtpl.lt)  
+37068450212